



Availability of dedicated Space for Innovation and Entrepreneurship activities

The process of innovating is essential for the continuing success of our college. Hence the dedicated space is made available for conducting entrepreneurial related activities. Here we are enterprising human action in pursuit of the generation of value, through the creation or expansion of economic activity, by identifying and exploiting new products, processes or markets. The overall space available for Innovation and Entrepreneurship related activities in TBI is 910 Sq. mts.

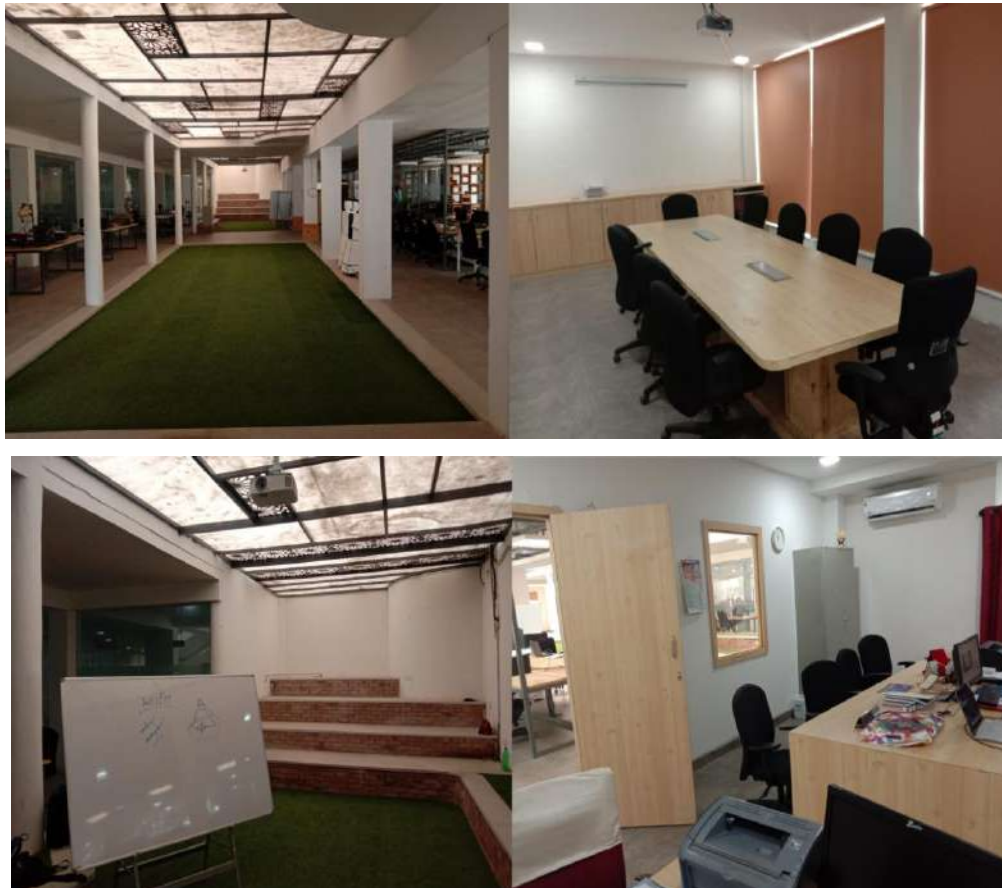


Figure-1 Space for Innovation and Entrepreneurship activities

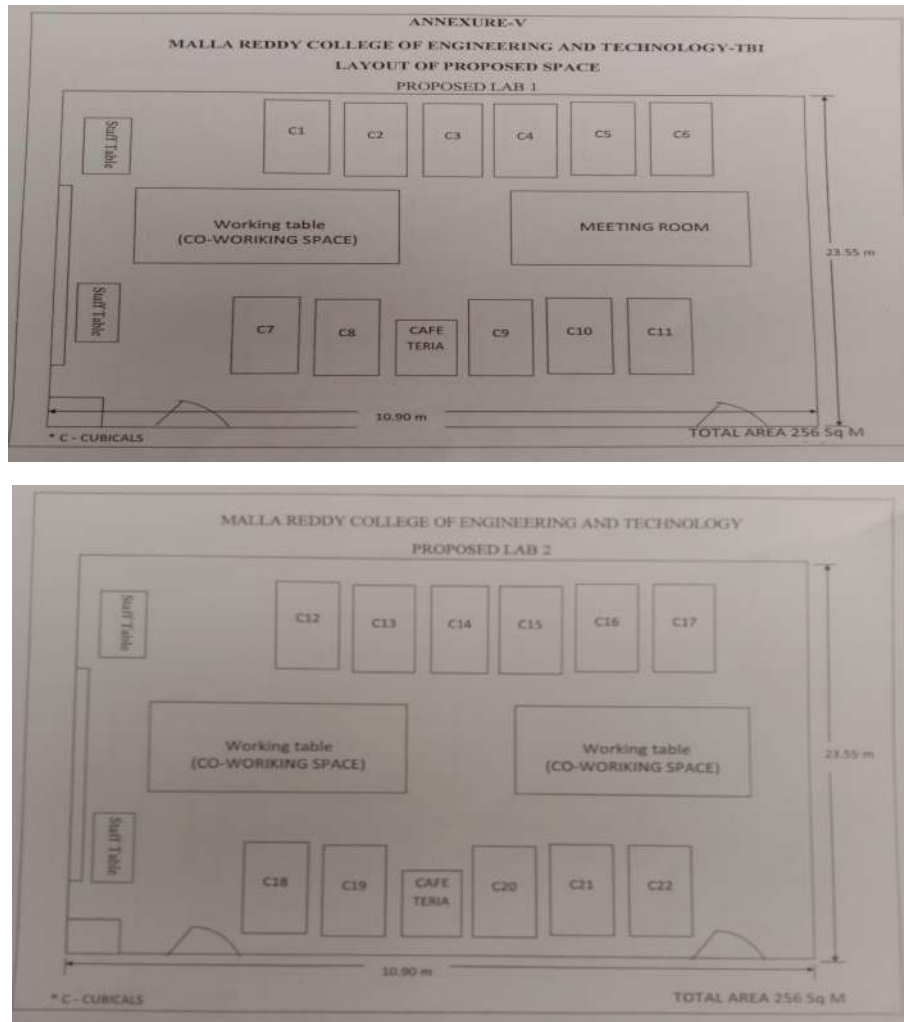


Figure-2 Layout of TBI for Innovation and Entrepreneurship activities